

[DJ / Club Mixers](#)[Small Format Live Sound](#)[Large Format Live Sound](#)[Sound Management Systems](#)

Page 1 of 4

[next](#)

XONE:V6



Xone:V6 is an echo of the earliest days of pro audio, when idealistic individuals created outstanding products free from cost or time constraints. Such creations were never cheap. Nor did they sell in their thousands. But they did become landmark design classics.

XONE:S6



The Xone:S6 has been introduced to make the sonic purity and top-class performance of the Xone:V6 accessible to a wider audience. Built with exactly the same components as the V6, it boasts all the same features, with the exception of the valve preamps, which only the Xone:V6 has available.

The Product Range

ALLEN&HEATH has forged a solid pedigree in the pro audio market and with 35 years experience under our belt it's safe to say we know our customers' and their needs.

We pride ourselves in creating products for everyone involved in musical performance whatever their experience or budget. Our small format mixers have been designed with the same commitment to professionalism and detail that has made ALLEN&HEATH a leading name associated with larger format consoles.

Whether you are a PA rental company, touring or recording artist, bar, nightclub, house of worship, school or theatre, ALLEN&HEATH's range of dj, club, small & large format live sound mixers and our powerful audio distribution systems, have been designed with users in mind, providing all the features and functionality you'll ever need.

[Home](#)[Product List](#)[US Dealers](#)[Press Room](#)[Downloads & Media](#)[Worldwide Distributors](#)[Frequently Asked Questions](#)[Technical Support](#)[Register Your Product](#)[Service Centres](#)[Manufacturing](#)[Real Time Analyser](#)[Contact Allen & Heath](#)[Mixing Live with VCAs](#)[Xone Website](#)[Old Products](#)

XONE:S2



Xone:S2 is a new analogue installation DJ mixer for use in clubs and bars, and by professional mobile DJ's. It's a 19" rack-mount 4U mixer featuring 4 stereo dual-input channels, 2 mono mic/stereo line channels, with a choice of linear or rotary VCA channel faders, along with the legendary Xone analogue filter and a host of other functions. Uniquely, a USB audio interface is provided, enabling easy integration of digital media. The USB interface can be used for playback and recording to or from the Xone:S2 and a computer, or used with software to act like a hardware effects unit. The Xone:S2 represents the ideal package for club installers, with many features designed to integrate it into a typical PA system, including an output limiter system that enables the installer to preset the maximum output level of the mixer. A dedicated alarm input mutes all music channels, and an alarm message audio input connection is provided. An additional stereo input (RCA) is accessible on the front panel - enabling guest DJs to patch in additional music sources.

XONE:92



The Xone:92 represents the culmination of everything we've learned from the DJ market. It's the result of something we've done since Day One - listening to DJ's. The result is a versatile mixer that promises to fulfill every wish list, with features to suit all styles from breakbeat to techno, trance to house

XONE:62



**Voted Best Club Installation Mixer
in the DJ Magazine Techno-Scan Awards 2002 & 2003**

This purebred club mixer has truly raised the bar in terms of club audio quality. It's also quickly become the mixer of choice for many of the world's greatest DJs, thanks to its pristine sound, its phenomenal VCF filters and its creative 4 band EQ. Club owners – if you want to know how good your big-money speaker system could sound, try it with a Xone:62.

✱ XONE:464



When we decided to build a club mixer, we wanted to satisfy club techs and DJs alike. Xone:464 naturally shares its construction methods with our pro touring desks, so venues can depend on it for outstanding audio and reliability.

⚙️ XONE:3D



The Xone:3D is a unique performance DJ controller that for the first time enables the seamless integration of computer-based digital media into the traditional DJ workspace. Combining a fully featured, high specification professional analogue DJ mixer with a comprehensive MIDI control system and a high end multi-channel USB soundcard, the Xone:3D has been designed in conjunction with some of the world's most cutting-edge DJ/producers.

⚙️ XONE:32



Is it us, or do most DJ mixers look like they've been designed by middle-aged failed guitarists who think all DJs are naughty 12 year-olds?? We're a bit different. All the Xones are created by a design engineer with 20 years' DJing experience under his belt, so they're serious consoles for creative adults.

⚙️ XONE:1D



The Xone:1D is a dedicated MIDI controller connected and powered by USB, which can be used to control DJ software such as Ableton Live and Traktor3. Use the Xone:1D with any DJ mixer to add digital control, or add the 1D to a Xone:2D to your favourite mixer to make up the equivalent to a Xone:3D! As well as the USB connection, the Xone:1D has 5-pin DIN MIDI sockets for connection to other MIDI-enabled devices, such as samplers, sequencers or recorders. In the same way as the acclaimed Xone:3D mixer/controller works, all the MIDI controls can be mapped to software for use as navigation controls, providing the user with the same tactile control of performance software.

XONE:02



From inputs to outputs, we created Xone:02 to be the world's greatest battle / scratch mixer. The crossfader is a deluxe Penny & Giles VCA design, reversible, they all have contour controls and they can all be easily replaced by removing the steel faceplate. We've kept the fader area clear for action and we've kept controls like pan and EQ out of the way on low profile sliders. Even the transform switches can be rotated to work the way you like them. Don't go into battle with anything less.

[DJ / Club Mixers](#)[Small Format Live Sound](#)[Large Format Live Sound](#)[Sound Management Systems](#)

Page 2 of 4

[previous](#)[next](#)

XONE VF-1



The XONE:VF-1 is a high quality, 1U rack analogue filter unit equipped with a wide range of input and output connectors, which features an enhanced version of the legendary XONE Filter circuits. An RIAA preamp version – the Xone VF-1R - enabling direct connection to turntables, is also available.

MixWizard WZ³ 20S



Now upgraded to WZ3 status, the 20S remains a favourite mixer for small broadcast studios, internet radio stations, project studios and stereo sub-mixing anywhere. Featuring the new WZ3 preamp and responsive EQ, the WZ3 20S provides 12 channels with no fewer than 4 mono and 18 stereo sources.

MixWizard WZ³ 16:2

The Product Range

ALLEN&HEATH has forged a solid pedigree in the pro audio market and with 35 years experience under our belt it's safe to say we know our customers' and their needs.

We pride ourselves in creating products for everyone involved in musical performance whatever their experience or budget. Our small format mixers have been designed with the same commitment to professionalism and detail that has made ALLEN&HEATH a leading name associated with larger format consoles.

Whether you are a PA rental company, touring or recording artist, bar, nightclub, house of worship, school or theatre, ALLEN&HEATH's range of dj, club, small & large format live sound mixers and our powerful audio distribution systems, have been designed with users in mind, providing all the features and functionality you'll ever need.

- [Home](#)
- [Product List](#)
- [US Dealers](#)
- [Press Room](#)
- [Downloads & Media](#)
- [Worldwide Distributors](#)
- [Frequently Asked Questions](#)
- [Technical Support](#)
- [Register Your Product](#)
- [Service Centres](#)
- [Manufacturing](#)
- [Real Time Analyser](#)
- [Contact Allen & Heath](#)
- [Mixing Live with VCAs](#)
- [Xone Website](#)
- [Old Products](#)



The WZ3:16:2 is a versatile, easy to use 16 mic/line channel mixer - the next generation of this industry standard multi-purpose design

Please note: The method of editing the digital FX software in the MixWizard 16 and 12 mixers has changed. To check which method you need to use to edit FX parameters, please see below. For MixWizard version 2 and some version 3 mixers with serial numbers commencing with any of these prefixes, W21602.. W21202.. W31602.. W31202...the editing software may be downloaded here: [Wizard FX Editor Software](#) For MixWizard version 3 mixers with serial numbers commencing with these prefixes: W31622.. W31222...there is currently no proprietary Allen & Heath software editor. However, the effects parameters can be edited via MIDI using a WZ FX Graphical User Interface that runs within Stardraw Control, which may be downloaded from the Stardraw website here: [Stardraw Control](#) Please note before you download the GUI, that you will need Stardraw Control to make any changes to the parameters. Please also note that you will need to have Microsoft's '.NET Framework' installed. The GUI which runs within Stardraw Control may be downloaded here: [WZ FX Ed V2](#) If you wish to edit the parameters using your own hardware and software, please read [This Document](#) which describes the MIDI implementation of the parameters.

MixWizard WZ³ 14:4:2



The WZ3:14:4:2 is a remarkably dynamic compact mixer, with multifunctionality that allows it to be used for FOH, monitors, and live or studio recording.

Mix Wizard WZ³ 12M



Allen & Heath is proud to present the WZ 12M, an easy-to-use compact mixer for on-stage monitoring. The growth of personal headphone monitoring has led to a huge increase in demand for mixers with multiple stereo mix outputs. Wizard Monitor has been developed to embrace modern on-stage mixing, and joins the GL2800M in Allen & Heath's successful monitor desk range. The mixer allows musicians to easily control their own mixes on stage, while the mixer will also be at home in rehearsal rooms and studios. 6 stereo mixes or 12 mono wedge outputs - or a combination of mono and stereo - are fed from 16 mono mic/line inputs. The mixer features the crystal-clear WZ3 preamplifier, passive microphone splitter and 4-four band EQ, with all mix masters on faders and colour-coded in pairs for easy identification.

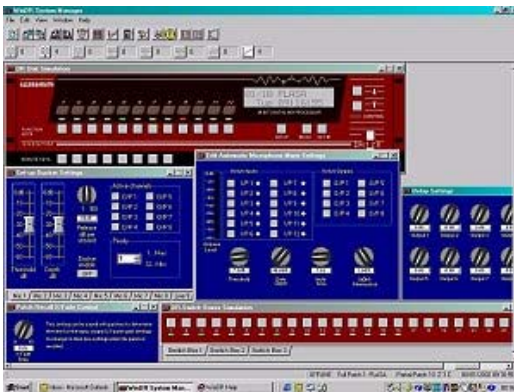
MixWizard WZ³ 12:2



With the same functionality as its larger sister models, the WZ3:12:2 embodies the ultimate multipurpose compact mixer, with 2 extra dual stereo inputs for stereo sources such as keyboards

or CD players. **Please note:** The method of editing the digital FX software in the MixWizard 16 and 12 mixers has changed. To check which method you need to use to edit FX parameters, please see below. For MixWizard version 2 and some version 3 mixers with serial numbers commencing with any of these prefixes, W21602.. W21202.. W31602.. W31202.. ..the editing software may be downloaded here: Wizard FX Editor Software For MixWizard version 3 mixers with serial numbers commencing with these prefixes: W31622.. W31222.. ...there is currently no proprietary Allen & Heath software editor. However, the effects parameters can be edited via MIDI using a WZ FX Graphical User Interface that runs within Stardraw Control, which may be downloaded from the Stardraw website here: Stardraw Control Please note before you download the GUI, that you will need Stardraw Control to make any changes to the parameters. Please also note that you will need to have Microsoft's '.NET Framework' installed. The GUI which runs within Stardraw Control may be downloaded here: WZ FX Ed V2 If you wish to edit the parameters using your own hardware and software, please read :This Document which describes the MIDI implementation of the parameters.

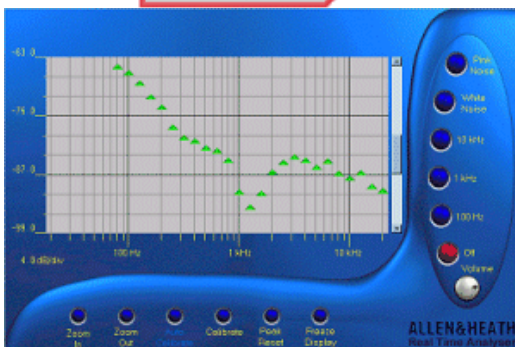
WinDR



Available free from Allen & Heath, WinDR System Manager is a Windows™ 95 / 98 / 2000 / NT4 application provided with the DR128 and DR66 digital installation mixers. WinDR provides an intuitive graphical interface for setting up the DR128/DR66 and is mainly used for configuring the unit's signal processing, which cannot be done from its front panel. During configuration the DR unit is connected to a PC via RS232 serial link (cables can be up to 3m in length). Once configured, the DR128/DR66 operates as a stand-alone unit, not requiring a PC. WinDR can also be used 'Offline', so a DR128/DR66 installation can be designed or modified without having the DR128/DR66 physically connected to the PC and the configuration can be saved on disk until the DR128/DR66 becomes available [alternatively use DR Gateway via an IP network to connect to the DR].

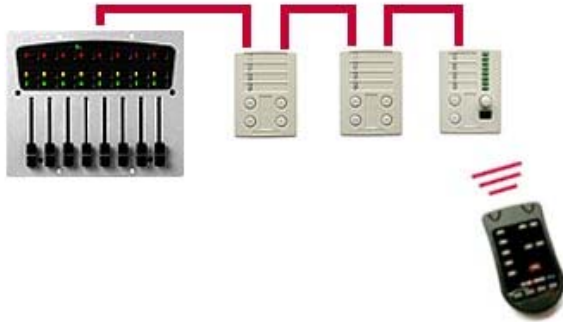
RTA

Now Windows
XP Compatible



This is an incredibly useful piece of software to keep on your notebook PC for setting up and checking audio systems. You can download a **FREE**, fully working 14 day trial of the software and if you decide you want to keep using your RTA, registration is just £6.25 (less than US\$10). Click here if you want to register now.

PL SERIES REMOTE CONTROLLERS



The PL series is the perfect interface between the iDR and the operators on site who don't need to understand the sound system - just control it. As the requirements grow at an installation, the control system can too! Start off with just the controls and display on the iDR unit then add wall mounted plates and handheld remotes wherever they are needed using our CAT5 PL-Anet cabling system. PL remotes can simply daisy chain or use the PL-Anet hub for star wiring applications. LEDs in the system can be tri-colour status indicators [to indicate selected sources, or mutes] or they can become meters for any point in the signal flow. The LCD windows can easily be programmed to relay text information about the state of the system. You, as the designer, can customise these plug and play remotes to do exactly what the customer has been looking for. Each PL has its own simulator in iDR system manager software so you can design and demo the system offline as it will appear when the hardware is in place.

PA28



The PA range (PA12, PA20 and PA28) are robust compact mixers with a straight forward layout and buckets of functionality. With a design and build quality that mirrors our professional touring desks, these mixers are an essential addition to any band, school, theatre, or hire inventory.

[DJ / Club Mixers](#)[Small Format Live Sound](#)[Large Format Live Sound](#)[Sound Management Systems](#)

Page 3 of 4

[previous](#)[next](#)

PA20-CP



The PA20-CP are sturdy, "walk up and go" powered mixers, guaranteed to deliver loads of weighty power from their 'Constant Power' amplifiers. These well thought-out mixers offer operational flexibility for any live sound situation and engineers of any experience.

PA20



The PA20 mixer has been designed with all the tools you will need to run a standard stereo PA system. With ALLEN&HEATH's legendary innovative design and excellent sound quality, these entry level consoles makes an ideal live mixer for club performers, schools' systems, conference rooms and travelling musicians. If you care about quality you'll also appreciate the build standards that the PA series conforms to, including the same individual vertical circuit boards, nutted pots and solid copper buss interconnection as our acclaimed ML series consoles. As for audio performance, PA20 mixers have the wonderfully full, open, natural quality that you'd expect from a

The Product Range

ALLEN&HEATH has forged a solid pedigree in the pro audio market and with 35 years experience under our belt it's safe to say we know our customers' and their needs.

We pride ourselves in creating products for everyone involved in musical performance whatever their experience or budget. Our small format mixers have been designed with the same commitment to professionalism and detail that has made ALLEN&HEATH a leading name associated with larger format consoles.

Whether you are a PA rental company, touring or recording artist, bar, nightclub, house of worship, school or theatre, ALLEN&HEATH's range of dj, club, small & large format live sound mixers and our powerful audio distribution systems, have been designed with users in mind, providing all the features and functionality you'll ever need.

[Home](#)[Product List](#)[US Dealers](#)[Press Room](#)[Downloads & Media](#)[Worldwide Distributors](#)[Frequently Asked Questions](#)[Technical Support](#)[Register Your Product](#)[Service Centres](#)[Manufacturing](#)[Real Time Analyser](#)[Contact Allen & Heath](#)[Mixing Live with VCAs](#)[Xone Website](#)[Old Products](#)

professional ALLEN&HEATH desk.

PA12-CP



The PA12-CP are sturdy, "walk up and go" powered mixers, guaranteed to deliver loads of weighty power from their 'Constant Power' amplifiers. These well thought-out mixers offer operational flexibility for any live sound situation and engineers of any experience.

PA12



The PA12 mixer has been designed with all the tools you will need to run a standard stereo PA system. With ALLEN&HEATH's legendary innovative design and excellent sound quality, these entry level consoles makes an ideal live mixer for club performers, schools' systems, conference rooms and travelling musicians. If you care about quality you'll also appreciate the build standards that the PA series conforms to, including the same individual vertical circuit boards, nutted pots and solid copper buss interconnection as our acclaimed ML series consoles. As for audio performance, PA12 mixers have the wonderfully full, open, natural quality that you'd expect from a professional ALLEN&HEATH desk.

ML5000



The ML5000 is a fitting flagship for our range, satisfying those loyal ALLEN&HEATH customers who wanted a console with the complete professional tool set.

ML4000



ML4000 sits squarely in the centre of the ML series, providing an ideal solution for those customers who need similar functionality to the ML5000 but who can't justify the size or expense.

ML3000



Never before has a fully equipped VCA desk been accessible to so many people. Once again we've applied our design skills to making a previously exclusive technology affordable to people on a real world budget.

LED Lamp



iDR-8 DSP SYSTEM



iDR is a 16in/16out DSP mixing and processing solution for installed and live audio systems that's

easily expandable, packed with processing muscle and endowed with a fantastic selection of remote control options.

iDR-4 DSP SYSTEM



The 1U rack or desk mount iDR-4 is the main unit in the iDR system having all the DSP (digital signal processing) power needed for 16 input and 16 output channels. The iDR-4 has a total of 6 balanced audio inputs including 2 XLR analogue mic/line and 4 TRS jack line inputs. It has 6 balanced audio outputs including 4 XLR analogue and 2 TRS jack line outputs.

Page 3 of 4

previous

next

[Back...](#)

[DJ / Club Mixers](#)[Small Format Live Sound](#)[Large Format Live Sound](#)[Sound Management Systems](#)

Page 4 of 4

[previous](#)

GR2



"The GR2 is a 9-input, 4-output, 2-zone analogue mixer from Allen & Heath. It's an elegant solution for modern, budget conscious installations requiring sound for live entertainment, paging, background music, seminar presentations and more."

GR05



The GR05 is a 1U rack or desk mount audio zone mixer for installation applications. It has a flexible architecture which allows easy custom configuration by the installer to exactly suit the requirements of the installation. Once installed it presents a simple control interface for day-to-day operation by non-technical staff.

GL4800



Based on the highly successful GL4000, this mixer is a real thoroughbred multi-function mixer, with a mass of features and detail that makes this mixer a joy for engineers to use. This is a truly multi-functional console, offering features such as group output trims for recording, extended auxiliaries using matrix sends, multiple main outputs and trimmable direct outputs from channels. The GL4800 is also a true workhorse: classic ALLEN&HEATH sound with a new mix head amp design, EQ section from the respected ML4000 and with solid construction, expandable frame design and an array of channel format options – it's the Swiss Army Knife of mixers! **Learn more about the new GL range at www.glservices.com**

The Product Range

ALLEN&HEATH has forged a solid pedigree in the pro audio market and with 35 years experience under our belt it's safe to say we know our customers' and their needs.

We pride ourselves in creating products for everyone involved in musical performance whatever their experience or budget. Our small format mixers have been designed with the same commitment to professionalism and detail that has made ALLEN&HEATH a leading name associated with larger format consoles.

Whether you are a PA rental company, touring or recording artist, bar, nightclub, house of worship, school or theatre, ALLEN&HEATH's range of dj, club, small & large format live sound mixers and our powerful audio distribution systems, have been designed with users in mind, providing all the features and functionality you'll ever need.

[Home](#)[Product List](#)[US Dealers](#)[Press Room](#)[Downloads & Media](#)[Worldwide Distributors](#)[Frequently Asked Questions](#)[Technical Support](#)[Register Your Product](#)[Service Centres](#)[Manufacturing](#)[Real Time Analyser](#)[Contact Allen & Heath](#)[Mixing Live with VCAs](#)[Xone Website](#)[Old Products](#)

GL3800



Combining the proven features of the best-selling GL3300 and the latest features of the GL2800, the GL3800 is destined to become a leading 8-bus console for live or recording work. The GL3800 is available in frame sizes up to 48 channels, with the choice of all mono, 4 or 8 stereo channels housed in a stylish chassis, including a meterpod with illuminated VU's, and front and rear ident strips. The GL3800 has been updated with more facilities for modern day mixing - it's truly dual-function with all 10 auxes configurable to fader control with insert point and XLR drive. The GL3800 has internal circuitry to autoswitch a second PSU where a fail-safe operation is desirable, and now with ultra-smooth dual rail K faders, this console will be a favourite of the connoisseur operator. **Learn more about the new GL range at www.glsite.com**

GL2800M



Dedicated to the job Top end monitor mix capability is now accessible to the budget conscious sound provider. The popular GL Series has grown with the addition of the GL2800M, a dedicated monitor console offering an easy to use, innovative tool set for simultaneously mixing large numbers of wedges and in-ears. With the benefits of personal freedom, a tailored mix for each musician and a quiet stage, IEM monitor systems have become increasingly popular with performers and engineer's alike. Although IEM has become a lot more affordable, the console required to run them properly is typically too large, complex or expensive for all but the biggest budgets. Meet the GL2800M... affordable, capable and easy to use - without compromise, exactly right for the job. **16 mixes with stereo capability** Stereo gives the performer a more natural listening environment but can be impractical for many sound providers as it doubles the number of mixes needed, often exceeding the capability of the console available. The GL2800M packs in a massive 16 mixes letting you control up to 8 stereo in-ears or more as combinations of wedges and in-ears. Multiple stereo in-ear mixing presents new challenges to the monitor engineer. You

need to balance every source including ambience within the stereo image according to the preference of each performer. The GL2800M provides tamperproof global mono/stereo assignment of its 16 mixes. Each stereo mix has level and pan control as well as stereo AFL signal checking for quick mixing without compromise.

/// GL2800 ///



A brand new dual-function mixer derived from our classic GL Series, the most popular mixers in the world for mid-range mixing applications. One glance at this new design will confirm that all our design experience and knowledge has been distilled into one amazingly capable console. Uniquely at this level, GL2800 is equipped with 10 auxiliary sends - including a dedicated stereo aux - and using the 12x4 matrix, provides the ideal solution for IEM and stereo recording. 8 audio groups and L,R and M busses are also provided, allowing for full dual functionality with 10 mixes with faders, inserts and XLR drive. And at the heart of this design is the new gain structure allowing a whopping 34dBu maximum input capability and a new ultra-quiet mix head amp section, delivering excellent audio performance. **Learn more about the new GL range at www.glseries.com**

/// GL2400 ///



For 35 years, Allen & Heath has designed truly innovative mixers for the real world and has earned its enviable reputation for superior performance, functionality and build quality. Building on the success of the industry-standard GL2200, we are proud to present the new 4-buss dual-function GL2400 - the next generation of a mixing classic. This mixer is designed for professional applications. Whether mixing FOH, monitors, or both, recording live or in the studio, installed in a busy or house of worship, out on the road touring or earning its keep in rental stock, the GL2400 provides the perfect solution. **Learn more about the new GL range at www.glseries.com**